

YK700XGL

Standard type: Large type

- Arm length 700mm
- Maximum payload 10kg

Note. This model is a special order product. Please consult us for delivery time.

Ordering method

YK700XGL **RCX340-4**

Model	Z axis stroke	Tool flange	Cable	Controller / Number of controllable axes	Safety standard	Option A (OP.A)	Option B (OP.B)	Option C (OP.C)	Option D (OP.D)	Option E (OP.E)	Absolute battery
	200: 200mm 300: 300mm	No entry: None F: With tool flange	3L: 3.5m 5L: 5m 10L: 10m								

Specify various controller setting items. RCX340 ▶ **P.678**

Specifications

		X-axis	Y-axis	Z-axis	R-axis
Axis specifications	Arm length	400 mm	300 mm	200 mm 300 mm	-
	Rotation angle	+/-130 °	+/-145 °	-	+/-360 °
AC servo motor output		400 W	200 W	200 W	200 W
Deceleration mechanism	Transmission method	Direct-coupled			
	Motor to speed reducer Speed reducer to output	Direct-coupled			
Repeatability ^{Note 1}		+/-0.01 mm		+/-0.01 mm	+/-0.005 °
Maximum speed		9.2 m/sec		2.3 m/sec 1.7 m/sec	1700 °/sec
Maximum payload		10 kg (Standard type), 9 kg (Tool flange mount type)			
Standard cycle time: with 2kg payload ^{Note 2}		0.50 sec			
R-axis tolerable moment of inertia ^{Note 3}		0.30 kgm ²			
User wiring		0.2 sq × 20 wires			
User tubing (Outer diameter)		φ6 × 3			
Travel limit		1.Soft limit 2.Mechanical stopper (X,Y,Z axis)			
Robot cable length		Standard: 3.5 m Option: 5, 10 m			
Weight		32 kg			

Note 1. This is the value at a constant ambient temperature. (X,Y axes)

Note 2. When reciprocating 300mm in horizontal and 25mm in vertical directions.

Note 3. The acceleration coefficient is set automatically in accordance with the tip weight and R-axis moment of inertia settings.

Controller

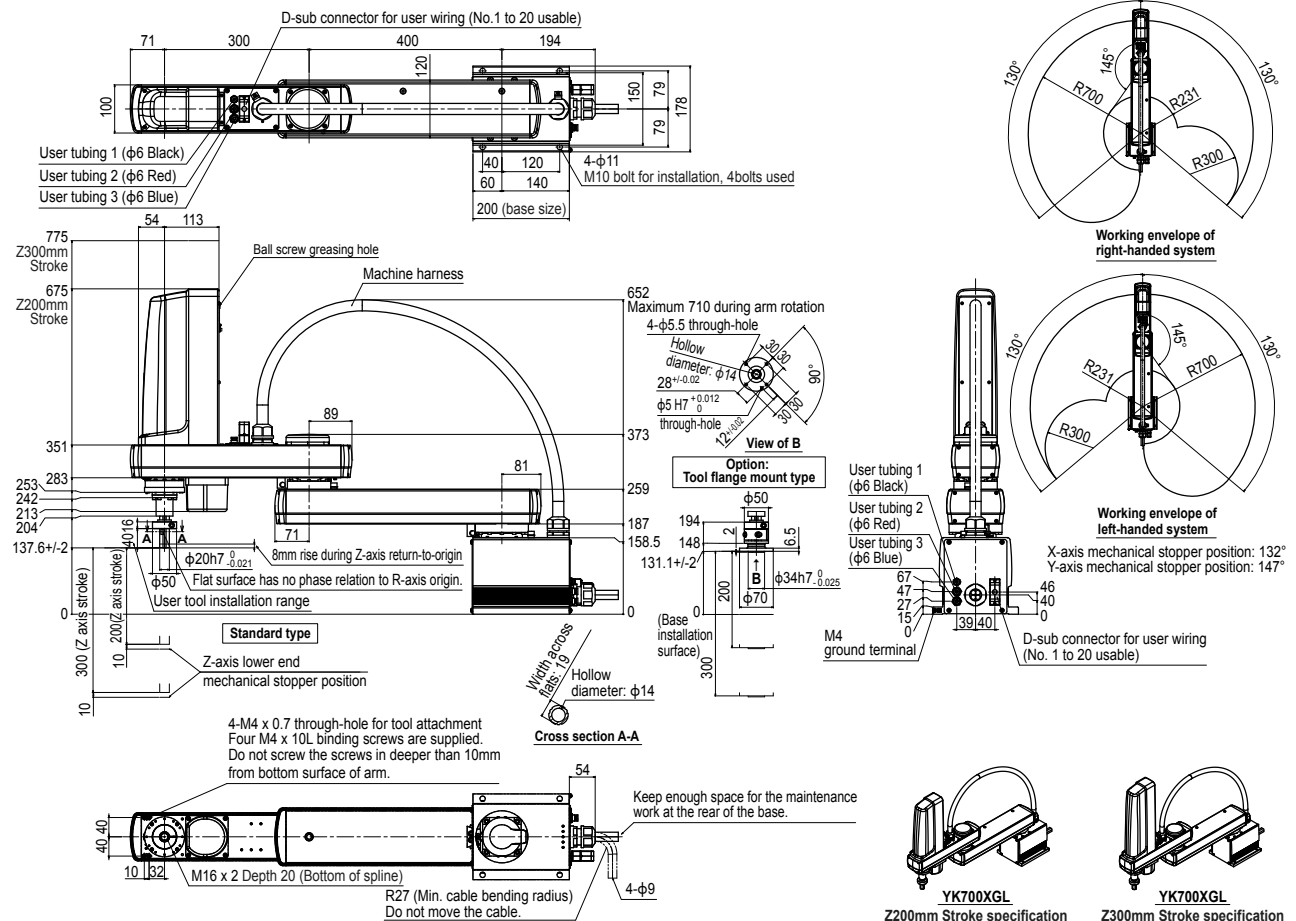
Controller	Power capacity (VA)	Operation method
RCX340	1700	Programming / I/O point trace / Remote command / Operation using RS-232C communication

Note. The movement range can be limited by changing the positions of X and Y axis mechanical stoppers. (The movement range is set to the maximum at the time of shipment.) See our robot manuals (installation manuals) for detailed information.

Note. To set the standard coordinates with high accuracy, use a standard coordinate setting jig (option). Refer to the user's manual (installation manual) for more details.

Our robot manuals (installation manuals) can be downloaded from our website at the address below:
<https://global.yamaha-motor.com/business/robot/>

YK700XGL



YK700XG

Standard type: Large type



- Arm length 700mm
- Maximum payload 20kg

Ordering method

YK700XG				RCX340-4								
Model	Z axis stroke 200: 200mm 400: 400mm	Tool flange No entry: None F: With tool flange	Cable 3L: 3.5m 5L: 5m 10L: 10m	Controller / Number of controllable axes	Safety standard	Option A (OP.A)	Option B (OP.B)	Option C (OP.C)	Option D (OP.D)	Option E (OP.E)	Absolute battery	

Specify various controller setting items. RCX340 ▶ **P.678**

Specifications

		X-axis	Y-axis	Z-axis	R-axis
Axis specifications	Arm length	300 mm	400 mm	200 mm	400 mm
	Rotation angle	+/-130 °	+/-150 °	-	+/-360 °
AC servo motor output		750 W	400 W	400 W	200 W
Deceleration mechanism	Transmission method	Direct-coupled			
	Motor to speed reducer Speed reducer to output	Direct-coupled			
Repeatability ^{Note 1}		+/-0.02 mm	+/-0.01 mm	+/-0.004 °	
Maximum speed		8.4 m/sec	2.3 m/sec	1.7 m/sec	920 °/sec
Maximum payload		20 kg (Standard type), 19 kg (Tool flange mount type)			
Standard cycle time: with 2kg payload ^{Note 2}		0.42 sec			
R-axis tolerable moment of inertia ^{Note 3}		1.0 kgm ²			
User wiring		0.2 sq x 20 wires			
User tubing (Outer diameter)		φ 6 x 3			
Travel limit		1.Soft limit 2.Mechanical stopper (X,Y,Z axis)			
Robot cable length		Standard: 3.5 m Option: 5 m, 10 m			
Weight		Z axis 200 mm: 50 kg Z axis 400 mm: 52 kg			

Note 1. This is the value at a constant ambient temperature. (X,Y axes)
 Note 2. When reciprocating 300mm in horizontal and 25mm in vertical directions.
 Note 3. The acceleration coefficient is set automatically in accordance with the tip weight and R-axis moment of inertia settings.
 Note. Please consult YAMAHA when connecting other tubes and cables to the self-supporting machine harness.

Controller

Controller	Power capacity (VA)	Operation method
RCX340	2500	Programming / I/O point trace / Remote command / Operation using RS-232C communication

Note. The movement range can be limited by changing the positions of X and Y axis mechanical stoppers. (The movement range is set to the maximum at the time of shipment.) See our robot manuals (installation manuals) for detailed information.

Note. To set the standard coordinates with high accuracy, use a standard coordinate setting jig (option). Refer to the user's manual (installation manual) for more details.

Our robot manuals (installation manuals) can be downloaded from our website at the address below:
<https://global.yamaha-motor.com/business/robot/>

YK700XG

Working envelope of left-handed system

Working envelope of right-handed system

Option: Tool flange mount type

YK700XG Z200mm Stroke specification

YK700XG Z400mm Stroke specification

YK800XG

Standard type: Large type



- Arm length 800mm
- Maximum payload 20kg

Ordering method

YK800XG				RCX340-4								
Model	Z axis stroke 200: 200mm 400: 400mm	Tool flange No entry: None F: With tool flange	Cable 3L: 3.5m 5L: 5m 10L: 10m	Controller / Number of controllable axes	Safety standard	Option A (O.P.A)	Option B (O.P.B)	Option C (O.P.C)	Option D (O.P.D)	Option E (O.P.E)	Absolute battery	

Specify various controller setting items. RCX340 ▶ **P.678**

Specifications

		X-axis	Y-axis	Z-axis	R-axis
Axis specifications	Arm length	400 mm	400 mm	200 mm 400 mm	-
	Rotation angle	+/-130 °	+/-150 °	-	+/-360 °
AC servo motor output		750 W	400 W	400 W	200 W
Deceleration mechanism	Transmission method	Direct-coupled			
	Motor to speed reducer Speed reducer to output	Direct-coupled			
Repeatability ^{Note 1}		+/-0.02 mm	+/-0.01 mm	+/-0.004 °	
Maximum speed		9.2 m/sec	2.3 m/sec	1.7 m/sec	920 °/sec
Maximum payload		20 kg (Standard type), 19 kg (Tool flange mount type)			
Standard cycle time: with 2kg payload ^{Note 2}		0.48 sec			
R-axis tolerable moment of inertia ^{Note 3}		1.0 kgm ²			
User wiring		0.2 sq x 20 wires			
User tubing (Outer diameter)		φ 6 x 3			
Travel limit		1.Soft limit 2.Mechanical stopper (X,Y,Z axis)			
Robot cable length		Standard: 3.5 m Option: 5 m, 10 m			
Weight		Z axis 200 mm: 52 kg Z axis 400 mm: 54 kg			

Note 1. This is the value at a constant ambient temperature. (X,Y axes)
 Note 2. When reciprocating 300mm in horizontal and 25mm in vertical directions.
 Note 3. The acceleration coefficient is set automatically in accordance with the tip weight and R-axis moment of inertia settings.
 Note. Please consult YAMAHA when connecting other tubes and cables to the self-supporting machine harness.

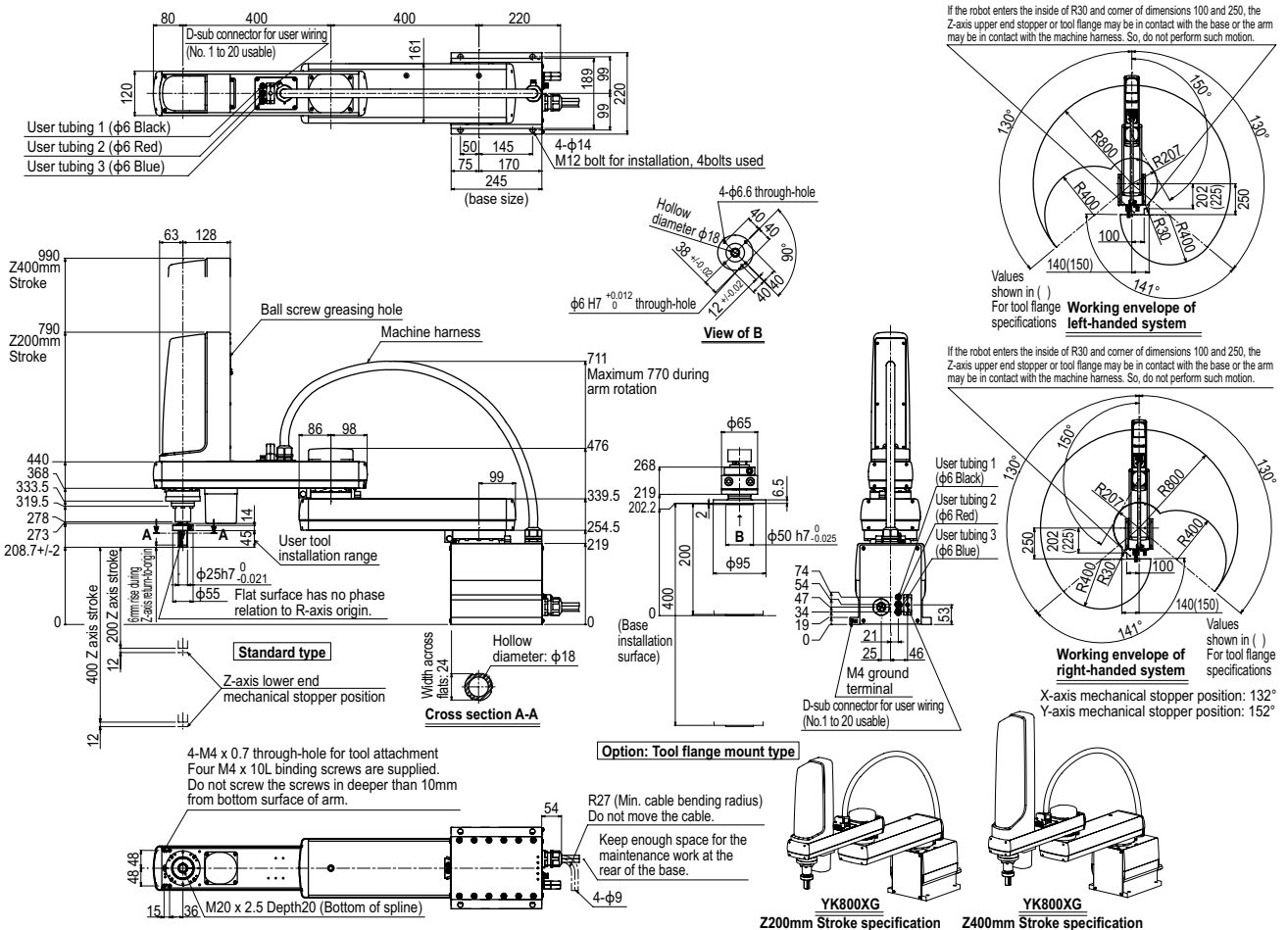
Controller

Controller	Power capacity (VA)	Operation method
RCX340	2500	Programming / I/O point trace / Remote command / Operation using RS-232C communication

Note. The movement range can be limited by changing the positions of X and Y axis mechanical stoppers. (The movement range is set to the maximum at the time of shipment.)
 See our robot manuals (installation manuals) for detailed information.
 Note. To set the standard coordinates with high accuracy, use a standard coordinate setting jig (option). Refer to the user's manual (installation manual) for more details.

Our robot manuals (installation manuals) can be downloaded from our website at the address below:
<https://global.yamaha-motor.com/business/robot/>

YK800XG



YK900XG

Standard type: Large type

- Arm length 900mm
- Maximum payload 20kg



Ordering method

YK900XG				RCX340-4								
Model	Z axis stroke 200: 200mm 400: 400mm	Tool flange No entry: None F: With tool flange	Cable 3L: 3.5m 5L: 5m 10L: 10m	Controller / Number of controllable axes	Safety standard	Option A (OP.A)	Option B (OP.B)	Option C (OP.C)	Option D (OP.D)	Option E (OP.E)	Absolute battery	

Specify various controller setting items. RCX340 ▶ **P.678**

Specifications

		X-axis	Y-axis	Z-axis	R-axis
Axis specifications	Arm length	500 mm	400 mm	200 mm	400 mm
	Rotation angle	+/-130 °	+/-150 °	-	+/-360 °
AC servo motor output		750 W	400 W	400 W	200 W
Deceleration mechanism	Transmission method	Direct-coupled			
	Motor to speed reducer Speed reducer to output	Direct-coupled			
Repeatability ^{Note 1}		+/-0.02 mm	+/-0.01 mm	+/-0.004 °	
Maximum speed		9.9 m/sec	2.3 m/sec	1.7 m/sec	920 °/sec
Maximum payload		20 kg (Standard type), 19 kg (Tool flange mount type)			
Standard cycle time: with 2kg payload ^{Note 2}		0.49 sec			
R-axis tolerable moment of inertia ^{Note 3}		1.0 kgm ²			
User wiring		0.2 sq x 20 wires			
User tubing (Outer diameter)		φ 6 x 3			
Travel limit		1.Soft limit 2.Mechanical stopper (X,Y,Z axis)			
Robot cable length		Standard: 3.5 m Option: 5 m, 10 m			
Weight		Z axis 200 mm: 54 kg Z axis 400 mm: 56 kg			

Note 1. This is the value at a constant ambient temperature. (X,Y axes)
 Note 2. When reciprocating 300mm in horizontal and 25mm in vertical directions.
 Note 3. The acceleration coefficient is set automatically in accordance with the tip weight and R-axis moment of inertia settings.
 Note. Please consult YAMAHA when connecting other tubes and cables to the self-supporting machine harness.

Controller

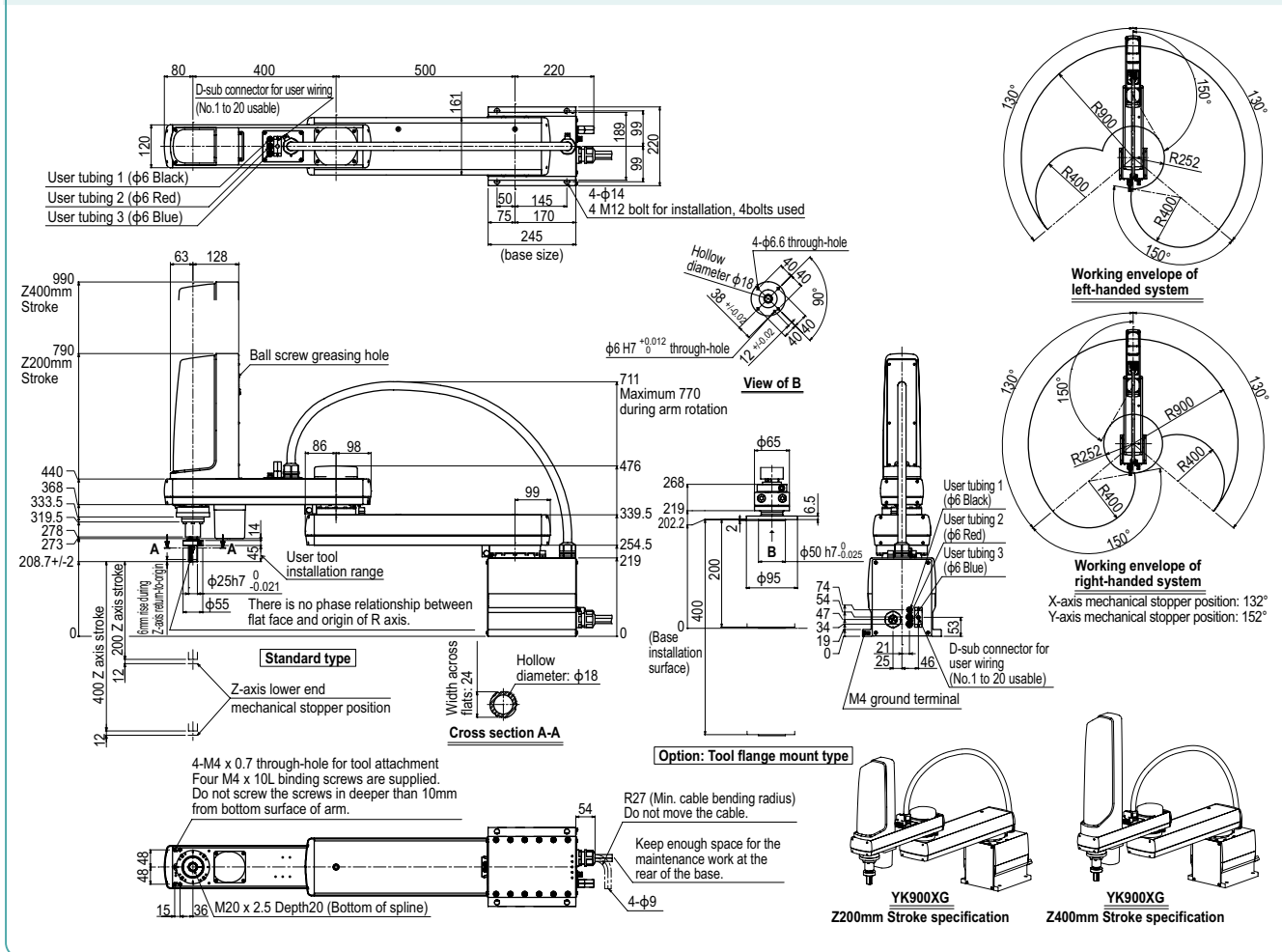
Controller	Power capacity (VA)	Operation method
RCX340	2500	Programming / I/O point trace / Remote command / Operation using RS-232C communication

Note. The movement range can be limited by changing the positions of X and Y axis mechanical stoppers. (The movement range is set to the maximum at the time of shipment.) See our robot manuals (installation manuals) for detailed information.

Note. To set the standard coordinates with high accuracy, use a standard coordinate setting jig (option). Refer to the user's manual (installation manual) for more details.

Our robot manuals (installation manuals) can be downloaded from our website at the address below:
<https://global.yamaha-motor.com/business/robot/>

YK900XG



YK1200X

Standard type: Large type

- Arm length 1200mm
- Maximum payload 50kg



Ordering method

YK1200X - 400

RCX340-4

Model	Z axis stroke	Cable	Controller / Number of controllable axes	Safety standard	Option A (O.P.A)	Option B (O.P.B)	Option C (O.P.C)	Option D (O.P.D)	Option E (O.P.E)	Absolute battery
		3L: 3.5m 5L: 5m 10L: 10m								

Specify various controller setting items. RCX340 ▶ **P.678**

Specifications

		X-axis	Y-axis	Z-axis	R-axis
Axis specifications	Arm length	600 mm	600 mm	400 mm	-
	Rotation angle	+/-125 °	+/-150 °	-	+/-180 °
AC servo motor output		900 W	800 W	600 W	400 W
Deceleration mechanism	Transmission method	Direct-coupled		Timing belt transmission	Timing belt transmission
	Motor to speed reducer Speed reducer to output	Direct-coupled		Direct-coupled	Direct-coupled
Repeatability ^{Note 1}		+/-0.05 mm		+/-0.02 mm	+/-0.005 °
Maximum speed		7.4 m/sec		0.75 m/sec	600 °/sec
Maximum payload		50 kg			
Standard cycle time: with 2kg payload ^{Note 2}		0.91 sec			
R-axis tolerable moment of inertia ^{Note 3}		2.45 kgm ²			
User wiring		0.2 sq x 20 wires			
User tubing (Outer diameter)		φ 6 x 3			
Travel limit		1.Soft limit 2.Mechanical stopper (X,Y,Z axis)			
Robot cable length		Standard: 3.5 m Option: 5 m, 10 m			
Weight		124 kg			

Note 1. This is the value at a constant ambient temperature. (X,Y axes)

Note 2. When reciprocating 300mm in horizontal and 25mm in vertical directions.

Note 3. The acceleration coefficient is set automatically in accordance with the tip weight and R-axis moment of inertia settings.

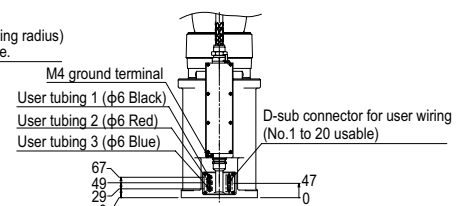
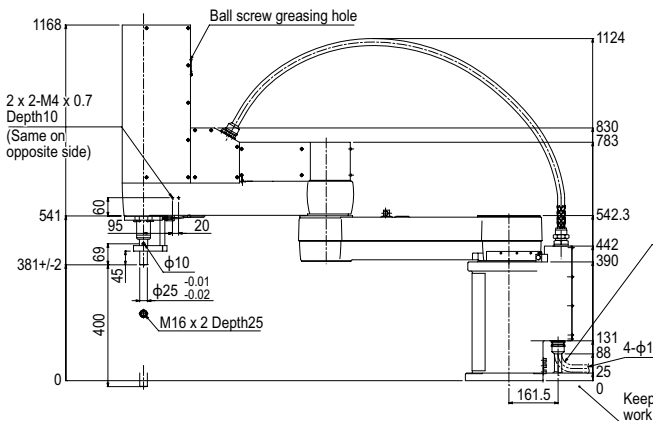
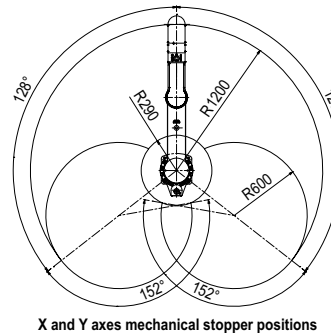
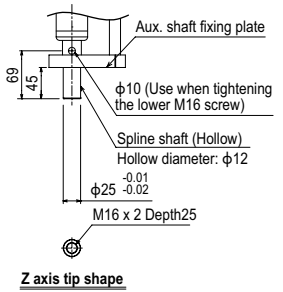
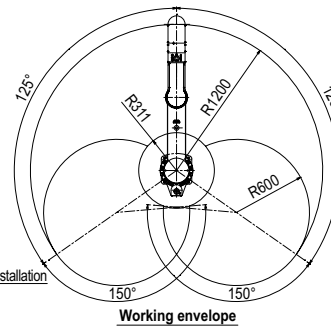
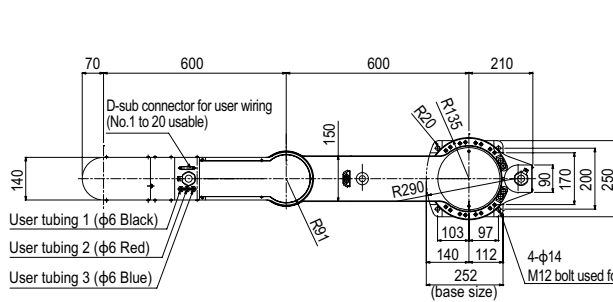
Controller

Controller	Power capacity (VA)	Operation method
RCX340	2500	Programming / I/O point trace / Remote command / Operation using RS-232C communication

Note. The movement range can be limited by changing the positions of X and Y axis mechanical stoppers. (The movement range is set to the maximum at the time of shipment.)
See our robot manuals (installation manuals) for detailed information.

Our robot manuals (installation manuals) can be downloaded from our website at the address below:
<https://global.yamaha-motor.com/business/robot/>

YK1200X



Articulated robots YA
Linear conveyor modules LCM
Single-axis robots CX
Motor-less single-axis actuator Robomity
Compact single-axis robots TRANSEVO
Single-axis robots FLIP-X
Linear motor single-axis robots PHASER
Cartesian robots XY-X
SCARA robots YK-X
Pick & place robots YP-X
CLEAN CONTROLLER INFORMATION
Oht/Extra small type
Small / Medium type
Large type
Wall mount / Inverse type
Dust-proof & drip-proof type